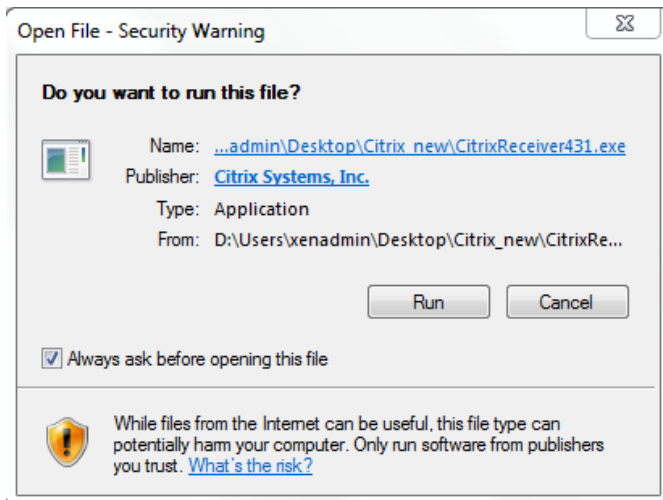


Instalaciju Citrix Receivera

Sama instalacija bi se trebala kretati ovako:



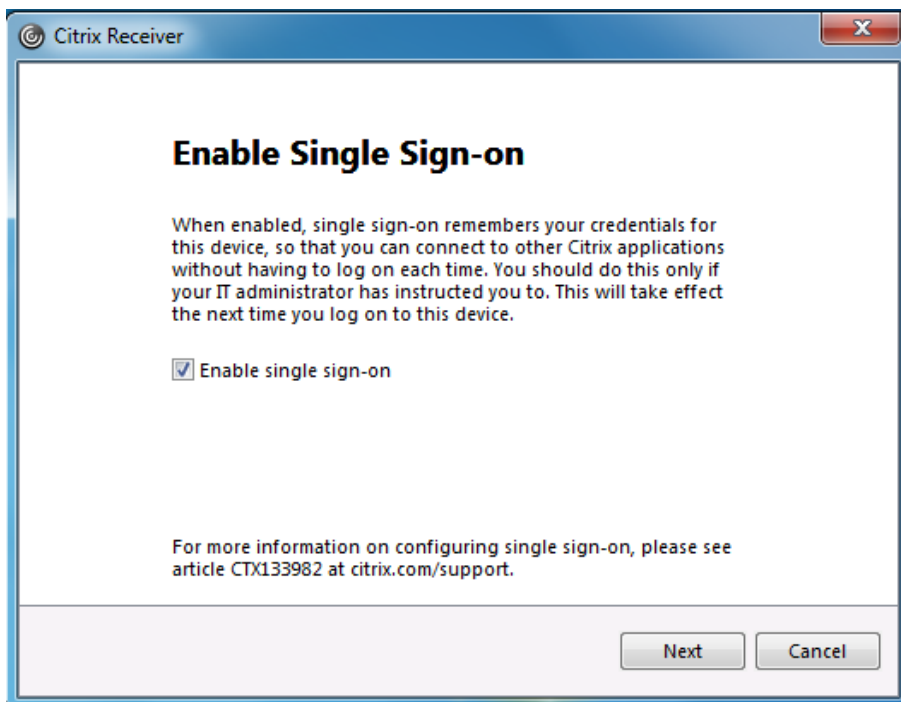
Klik mišem na "Run"



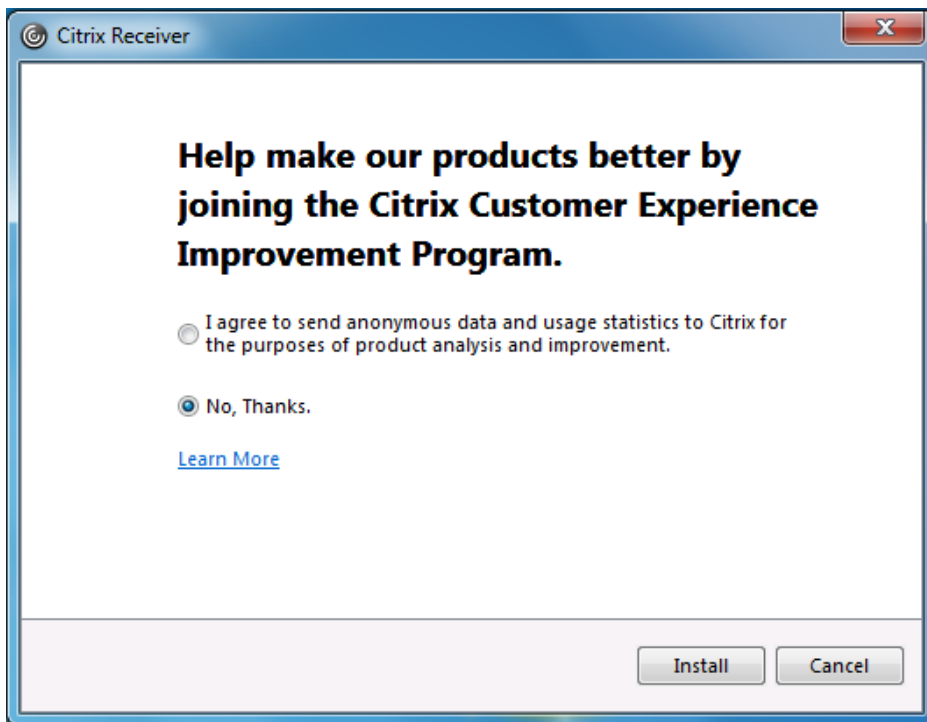
Klik mišem na "Start"



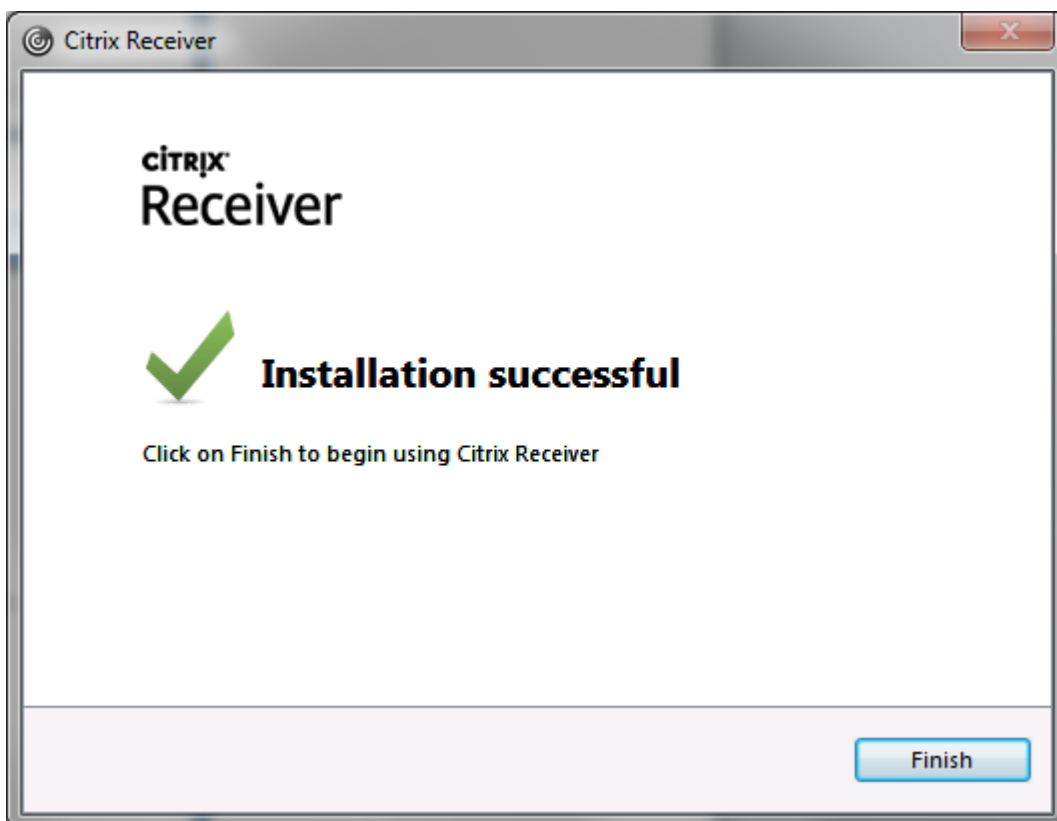
Označiti opciju "I accept the license agreement" i klik mišem na "Next"



Označiti opciju "Enable single sig-on" i klik mišem na "Next"



Označiti opciju "No, Thanks." i klik mišem na "Install"



Po završetku instalacije klik mišem na "Finish"